

GN 7072.2 | Dismountable split set collars

with axial mounting holes, stainless steel



- 1
- 2
- 3
- 4
- 5
- 6
- 7
- 8
- 9
- 10
- 11
- 12
- 13
- 14
- 15
- 16
- 17
- 18

STANDARD EXECUTIONS

Sintered AISI 316 LHC stainless steel.
Clamping assembly by means of two AISI 304 stainless steel screws, cylindrical head with hexagon socket.
Threaded pass-through hole d3 when $d1 = 30 \div 36$.
Threaded blind hole d3 when $d1 \geq 42$.
- **GN 7072.2-A:** with two axial plain pass-through holes.
- **GN 7072.2-B:** with two axial holes for cylindrical-head screws.
- **GN 7072.2-C:** with two axial threaded pass-through holes.

FEATURES AND APPLICATIONS

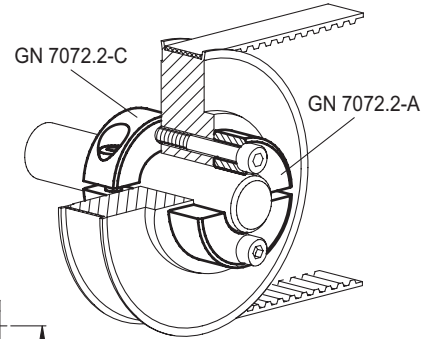
GN 7072.2 dismountable split set collars are assembled and fixed to the shaft by tightening the screw properly. The pass-through holes allow the axial fixing of shafts to wheels, pinions or machine bodies.
Compared to the single-body set collars, the dismountable split set collars can be positioned on the shaft without having to insert them from the end.
The clamping screws d3 may be replaced by clamping kit GN 311 (see page -).

TECHNICAL DATA

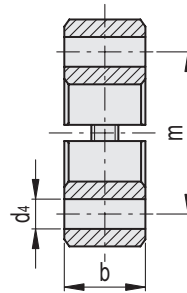
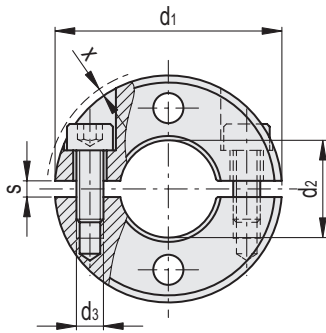
Assembly on h11 tolerance shafts.

ACCESSORIES

Dampening washers GN 7072.30 (see page -).



GN 7072.2-A



Conversion Table	
1 mm = 0.039 inch	
d1	
mm	inch
30	1.18
32	1.26
36	1.42
42	1.65
48	1.89
55	2.17
60	2.36
65	2.56

GN 7072.2-A



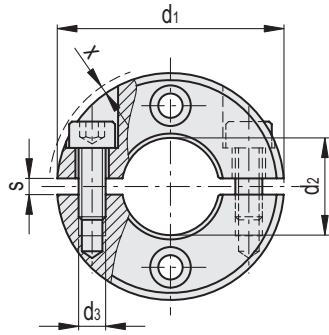
Code	Description	d1	d2 H10	d3	d4	b±0.2	m	s	x*	d3 Clamping kit	⚖
GN.75301	GN 7072.2-30-B12-NI-A	30	12	M4	4.5	11	21	2.1	0.7	GN 311-30-M4-12-SW	36
GN.75306	GN 7072.2-32-B14-NI-A	32	14	M4	4.5	11	23	2.1	0.7	GN 311-30-M4-12-SW	39
GN.75311	GN 7072.2-36-B15-NI-A	36	15	M5	5.5	13	25.5	2.1	1.4	GN 311-30-M5-13-SW	65
GN.75316	GN 7072.2-36-B16-NI-A	36	16	M5	5.5	13	26	2.1	1.4	GN 311-30-M5-13-SW	58
GN.75321	GN 7072.2-42-B18-NI-A	42	18	M5	5.5	15	30	3	0.6	GN 311-30-M5-15-SW	93
GN.75326	GN 7072.2-42-B20-NI-A	42	20	M5	5.5	15	31	3	0.6	GN 311-30-M5-15-SW	87
GN.75331	GN 7072.2-48-B22-NI-A	48	22	M5	6.5	15	35	3	-	GN 311-45-M5-16-SW	120
GN.75336	GN 7072.2-48-B25-NI-A	48	25	M5	6.5	15	36.5	3	-	GN 311-45-M5-16-SW	109
GN.75341	GN 7072.2-55-B28-NI-A	55	28	M6	6.5	15	41.5	3	0.5	GN 311-45-M6-18-SW	150
GN.75346	GN 7072.2-55-B30-NI-A	55	30	M6	6.5	15	42.5	3	0.5	GN 311-45-M6-18-SW	141
GN.75351	GN 7072.2-60-B32-NI-A	60	32	M6	6.5	15	46	4	0.4	GN 311-45-M6-19-SW	183
GN.75356	GN 7072.2-60-B35-NI-A	60	35	M6	6.5	15	47.5	4	0.4	GN 311-45-M6-19-SW	154
GN.75361	GN 7072.2-65-B40-NI-A	65	40	M6	6.5	15	52.5	4	0.5	GN 311-45-M6-20-SW	175

Standard machine parts

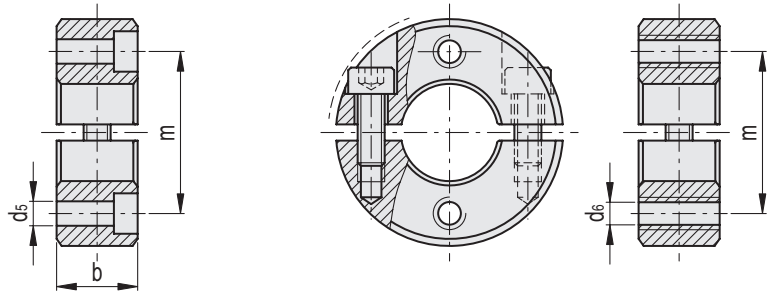
* Max protrusion of the screw head.

Conversion Table	
1 mm = 0.039 inch	
d1	
mm	inch
30	1.18
32	1.26
36	1.42
42	1.65
48	1.89
55	2.17
60	2.36
65	2.56

GN 7072.2-B



GN 7072.2-C



GN 7072.2-B

INOX STAINLESS STEEL METRIC

Code	Description	d1	d2 H10	d3	d5	b±0.2	m	s	x*	d3 Clamping kit	⚖
GN.75302	GN 7072.2-30-B12-NI-B	30	12	M4	3.5	11	21	2.1	0.7	GN 311-30-M4-12-SW	35
GN.75307	GN 7072.2-32-B14-NI-B	32	14	M4	3.5	11	23	2.1	0.7	GN 311-30-M4-12-SW	39
GN.75312	GN 7072.2-36-B15-NI-B	36	15	M5	4.5	13	25.5	2.1	1.4	GN 311-30-M5-13-SW	64
GN.75317	GN 7072.2-36-B16-NI-B	36	16	M5	4.5	13	26	2.1	1.4	GN 311-30-M5-13-SW	58
GN.75322	GN 7072.2-42-B18-NI-B	42	18	M5	4.5	15	30	3	0.6	GN 311-30-M5-15-SW	94
GN.75327	GN 7072.2-42-B20-NI-B	42	20	M5	4.5	15	31	3	0.6	GN 311-30-M5-15-SW	88
GN.75332	GN 7072.2-48-B22-NI-B	48	22	M5	5.5	15	35	3	-	GN 311-45-M5-16-SW	118
GN.75337	GN 7072.2-48-B25-NI-B	48	25	M5	5.5	15	36.5	3	-	GN 311-45-M5-16-SW	108
GN.75342	GN 7072.2-55-B28-NI-B	55	28	M6	5.5	15	41.5	3	0.5	GN 311-45-M6-18-SW	148
GN.75347	GN 7072.2-55-B30-NI-B	55	30	M6	5.5	15	42.5	3	0.5	GN 311-45-M6-18-SW	140
GN.75352	GN 7072.2-60-B32-NI-B	60	32	M6	5.5	15	46	4	0.4	GN 311-45-M6-19-SW	181
GN.75357	GN 7072.2-60-B35-NI-B	60	35	M6	5.5	15	47.5	4	0.4	GN 311-45-M6-19-SW	154
GN.75362	GN 7072.2-65-B40-NI-B	65	40	M6	5.5	15	52.5	4	0.5	GN 311-45-M6-20-SW	174

GN 7072.2-C

INOX STAINLESS STEEL METRIC

Code	Description	d1	d2 H10	d3	d6	b±0.2	m	s	x*	d3 Clamping kit	⚖
GN.75303	GN 7072.2-30-B12-NI-C	30	12	M4	M4	11	21	2.1	0.7	GN 311-30-M4-12-SW	36
GN.75308	GN 7072.2-32-B14-NI-C	32	14	M4	M4	11	23	2.1	0.7	GN 311-30-M4-12-SW	40
GN.75313	GN 7072.2-36-B15-NI-C	36	15	M5	M5	13	25.5	2.1	1.4	GN 311-30-M5-13-SW	67
GN.75318	GN 7072.2-36-B16-NI-C	36	16	M5	M5	13	26	2.1	1.4	GN 311-30-M5-13-SW	60
GN.75323	GN 7072.2-42-B18-NI-C	42	18	M5	M5	15	30	3	0.6	GN 311-30-M5-15-SW	95
GN.75328	GN 7072.2-42-B20-NI-C	42	20	M5	M5	15	31	3	0.6	GN 311-30-M5-15-SW	98
GN.75333	GN 7072.2-48-B22-NI-C	48	22	M5	M6	15	35	3	-	GN 311-45-M5-16-SW	121
GN.75338	GN 7072.2-48-B25-NI-C	48	25	M5	M6	15	36.5	3	-	GN 311-45-M5-16-SW	111
GN.75343	GN 7072.2-55-B28-NI-C	55	28	M6	M6	15	41.5	3	0.5	GN 311-45-M6-18-SW	152
GN.75348	GN 7072.2-55-B30-NI-C	55	30	M6	M6	15	42.5	3	0.5	GN 311-45-M6-18-SW	143
GN.75353	GN 7072.2-60-B32-NI-C	60	32	M6	M6	15	46	4	0.4	GN 311-45-M6-19-SW	184
GN.75358	GN 7072.2-60-B35-NI-C	60	35	M6	M6	15	47.5	4	0.4	GN 311-45-M6-19-SW	156
GN.75363	GN 7072.2-65-B40-NI-C	65	40	M6	M6	15	52.5	4	0.5	GN 311-45-M6-20-SW	177

* Max protrusion of the screw head.

